



**CKD Kutna Hora**

Czech producer of steel castings and weldments.

# Company Datas

- Producer of steel castings and welments
- Founded in 1967
- 800 employees
- Turnover 23 mil. EUR in 2016



**CKD Kutna Hora**

Czech producer of steel castings and weldments

# History milestones



- 1927 - CKD corporation was founded by a corporate merger.
- 1967 - The factory in Kutna Hora was put in operation.
- 1990 - CKD Kutna Hora became independent joint-stock Company.
- 1995 - The company was privatized.
- 2000 - CKD Kutna Hora bought an machining shop in Chrudim.
- 2013 - Company has new shareholders and stable financial position.
- 2016 - The company employs more then 800 workers.



**CKD Kutna Hora**  
Czech producer of steel castings and weldments

# Facilities



Foundry

Pattern shop

Machining shop

Tooling shop

Welding shop

Painting shop

Assembly shop

Laboratory



**CKD Kutná Hora**

Czech producer of steel castings and weldments

# Production Overview

**steel castings 15kg - 6 000kg**

**carbon steel, alloyed steel, low alloyed steel)**

**welded fabrications 100kg - 20 000 kg**

**(steel plates and steel cast parts)**

**machined and painted parts, ready for assembly**

**(milling, drilling, turning, priming, painting etc.)**



**CKD Kutna Hora**

Czech producer of steel castings and weldments

# Foundry

Carbon steel castings, low and medium-alloy steel castings.

## **Automatic moulding line**

boxes 1000 x 800 x 300 x 300 mm – castings 20-150 kg

## **Sand slinger moulding line**

boxes 1250 x 1250/1400/1600 – castings 80-600 kg

## **Alpha-Set line**

with or without moulding frames – castings 100 – 1.500 kg

## **Manual working place**

castings 100 - 6.000 kg



**CKD Kutna Hora**

Czech producer of steel castings and weldments

# Foundry



**CKD Kutna Hora**

Czech producer of steel castings and weldments

# Foundry



**CKD Kutna Hora**

Czech producer of steel castings and weldments

# Pattern production

CKD produces patterns mostly in its own pattern shop, utilising state-of-the-art modern 3D software and CNC milling machine.



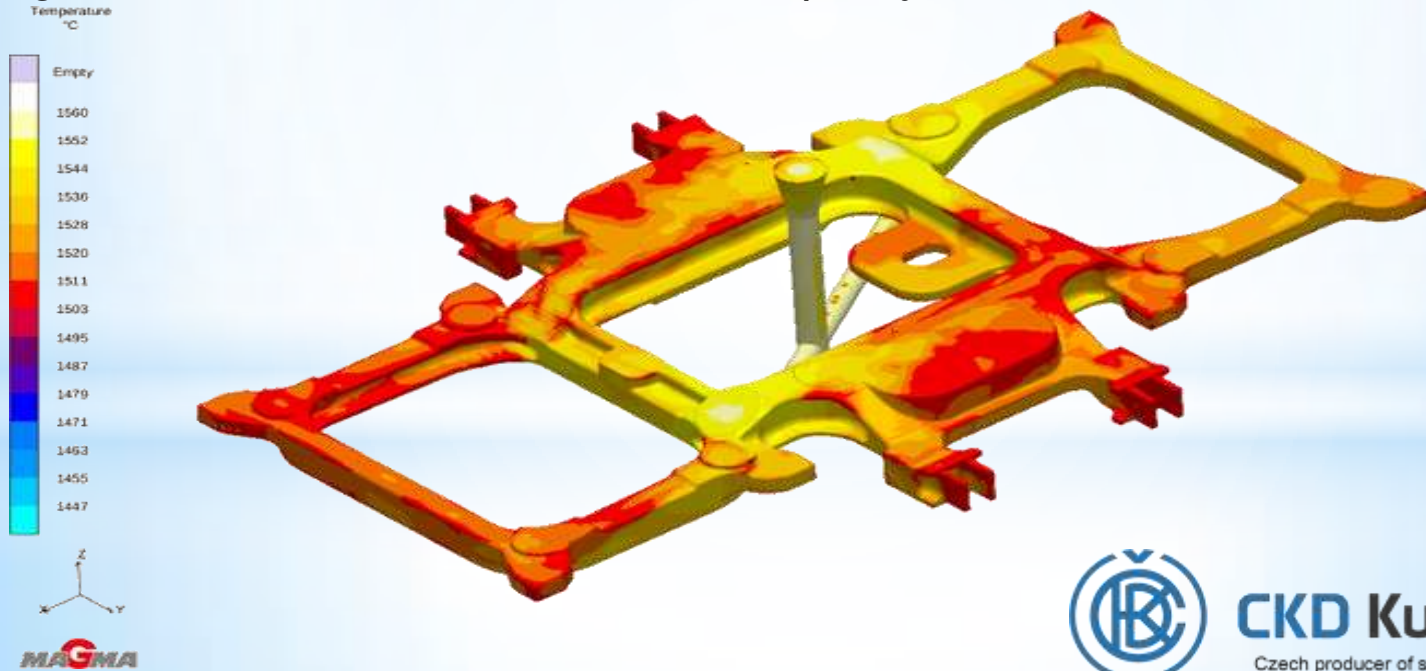
**CKD Kutna Hora**

Czech producer of steel castings and weldments

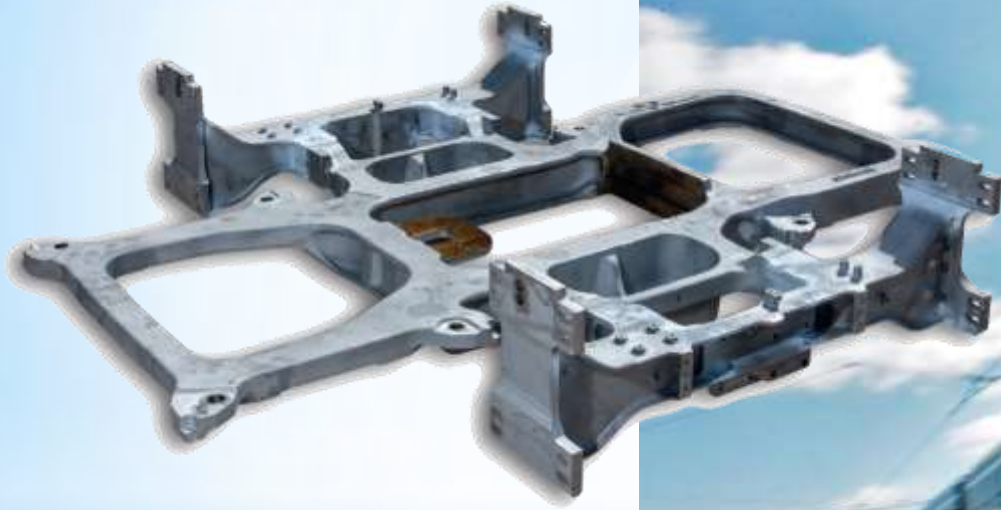
# Castings design

Our castings reach an excellent quality and fulfill all required properties.

We utilize the results gained by the computer simulation of the MAGMA software program for the solution of the internal quality.



# Castings design



**CKD Kutna Hora**

Czech producer of steel castings and weldments

# Castings



**CKD Kutna Hora**

Czech producer of steel castings and weldments

# Castings



**CKD Kutna Hora**

Czech producer of steel castings and weldments

# Machining shop

Welded components 50 – 20.000 kg

Complete railways bogies

Welded parts for earth-moving and road machinery.

Wagon, locomotive and tram bogie frame.

Other weldments

NC machining – accuracy +/- 0,022 mm

Painting (wet method)

Assembling



**CKD Kutna Hora**

Czech producer of steel castings and weldments

# Machining shop

110 machines are ready to serve our Customers!

Two machining shops in Kutna hora and Chrudim.

## Machining abilities

Machining process achieves the accuracy of  $\pm 0,022$  mm.

Machining on NC horizontal milling up to 1500x2800 mm.

Milling up to the dimension 16000 x 3500 x 1200 mm.

Drilling up to the dimension 3150 x 2500 x 1250 mm.

Turning on vertical lathes (carrousel) up to the diamete 4 000mm.

Turning on centre lathes up to the diameter 1250, length 4 000 mm.

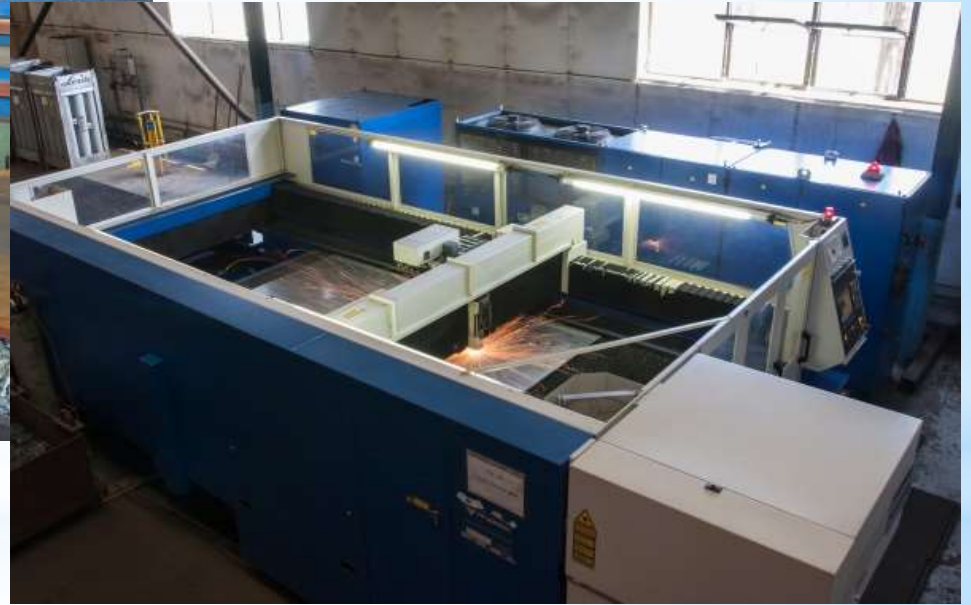
Drilling up to the diameter 80 mm.



**CKD Kutna Hora**

Czech producer of steel castings and weldments

# Machining shop



**CKD Kutna Hora**

Czech producer of steel castings and weldments

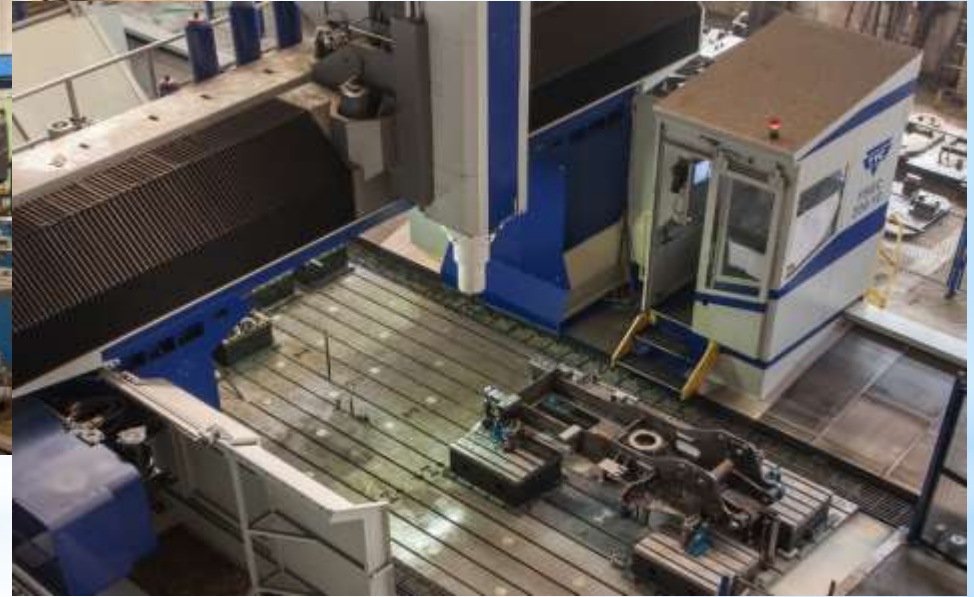
# Machining shop



**CKD Kutna Hora**

Czech producer of steel castings and weldments

# Machining shop



**CKD Kutna Hora**

Czech producer of steel castings and weldments

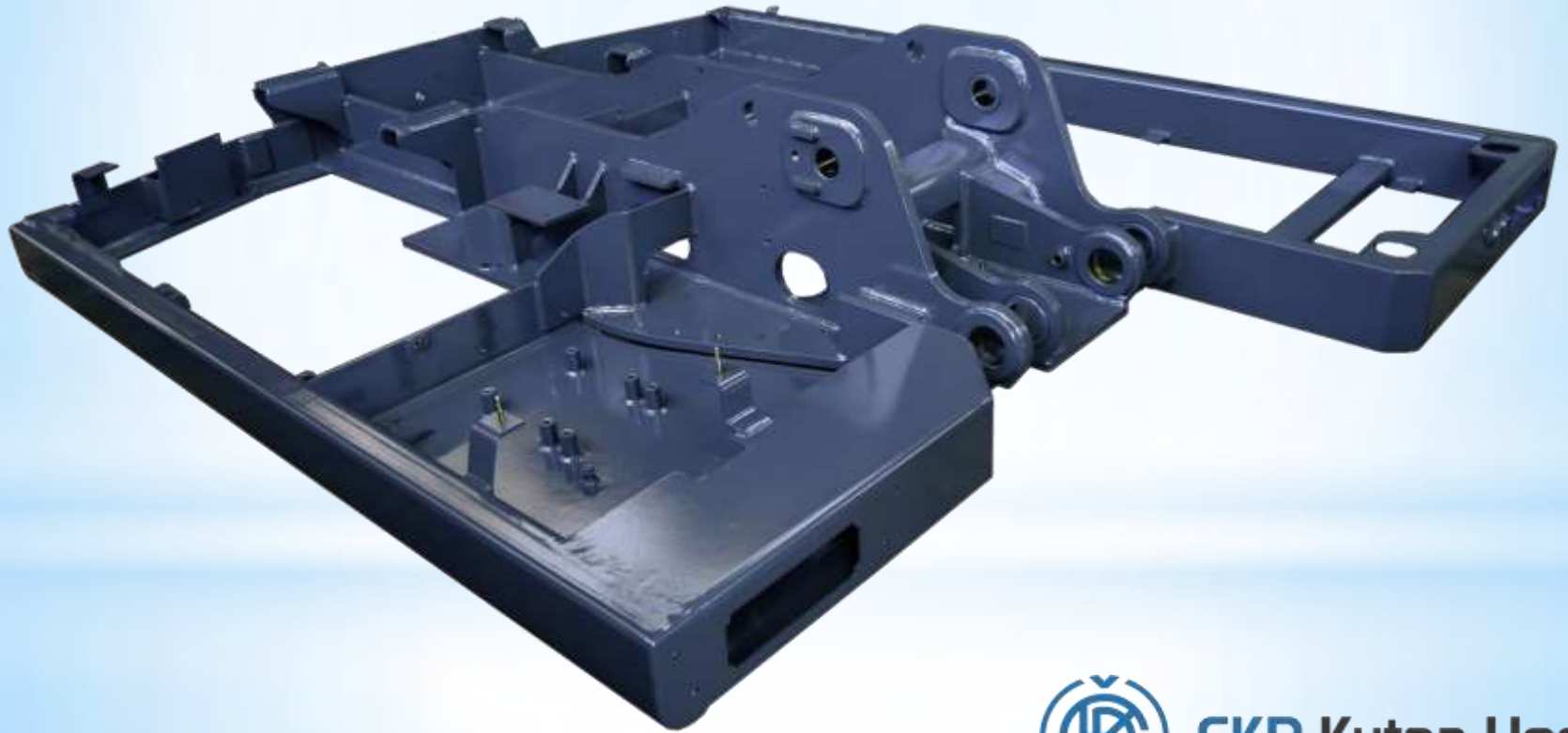
# Machined parts, weldments



**CKD Kutna Hora**

Czech producer of steel castings and weldments

# Machined parts, weldments



**CKD Kutna Hora**

Czech producer of steel castings and weldments

# Machined parts, weldments



**CKD Kutna Hora**

Czech producer of steel castings and weldments

# Assembled bogie LN25.



**CKD Kutna Hora**

Czech producer of steel castings and weldments

# Quality



**Chemical laboratory** - chemical analysis on spectrometer Q4 Tasman, checking of radioactivity.

**Mechanical laboratory** - tensile machines, hardness testers, Charpy tests up to  $-90^{\circ}\text{C}$ .

**Metallography Laboratory** - evaluation of micro- and macrostructure.

**Dimensional Check** - 3D machines Leica, Romer, Stiefelmayer, OPTON.

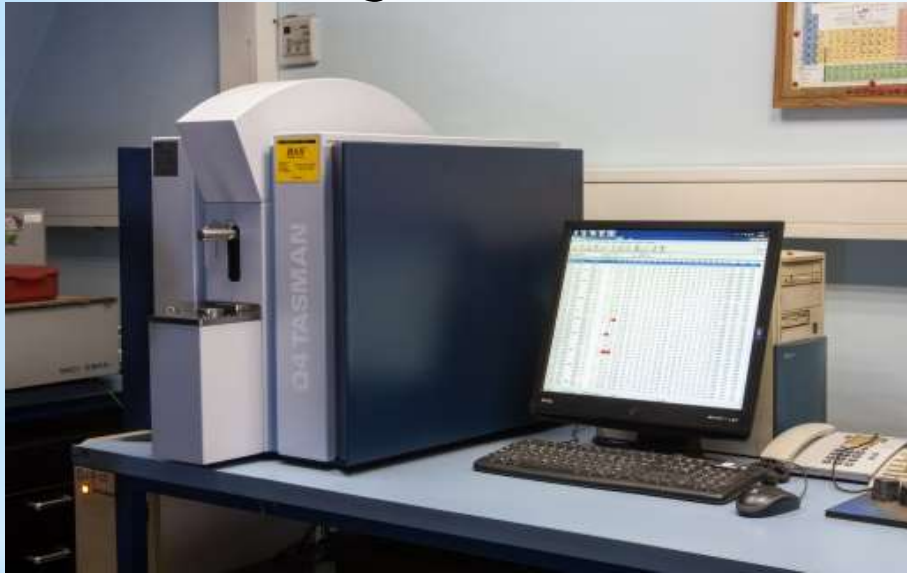
**Non-Destructive Testing** – visual inspection, magnetic inspection, radiography, ultrasonic tests, penetrant testing



**CKD Kutna Hora**

Czech producer of steel castings and weldments

# Quality



**CKD Kutna Hora**

Czech producer of steel castings and weldments



# Certificates



**CKD Kutna Hora**

Czech producer of steel castings and weldments

# Certificates



**CKD Kutná Hora**

Czech producer of steel castings and weldments